

**COLD STORAGE FACILITIES
AT
GMR HYDERABAD AIR CARGO
TERMINAL**



EXPORT PHARMA ZONE AT GHACLPL

INDIA'S FIRST AIRPORT BASED DEDICATED AND TEMPERATURE CONTROLLED STORAGE AND HANDLING FACILITY FOR EXPORT PHARMACEUTICALS

Traditional approach of competitive advantage no longer suffice.

Quality handling and continuous temperature controlled supply chain for pharmaceuticals are the core requirements of today's customers

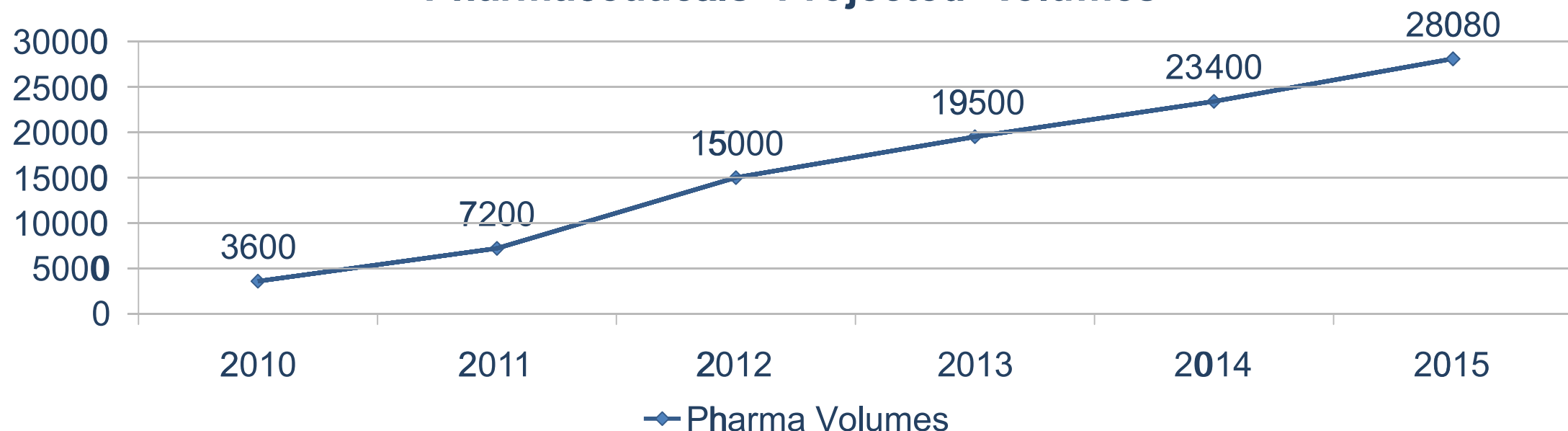


GMR Hyderabad Air Cargo and Logistics Pvt. Ltd.

PHARMACEUTICAL BUSINESS AT HYDERABAD

- Hyderabad is termed as a "PHARMACEUTICAL HUB OF INDIA"
- 70% of exports at Hyderabad constitute pharmaceuticals
- Around 1600-1800 tons of pharmaceuticals are exported every month from Hyderabad
- Currently only 15% of the total pharmaceutical export cargo is moving under temperature controlled handling
- This percentage will increase with the introduction of tighter controls from the international regulatory agencies

Pharmaceuticals- Projected Volumes



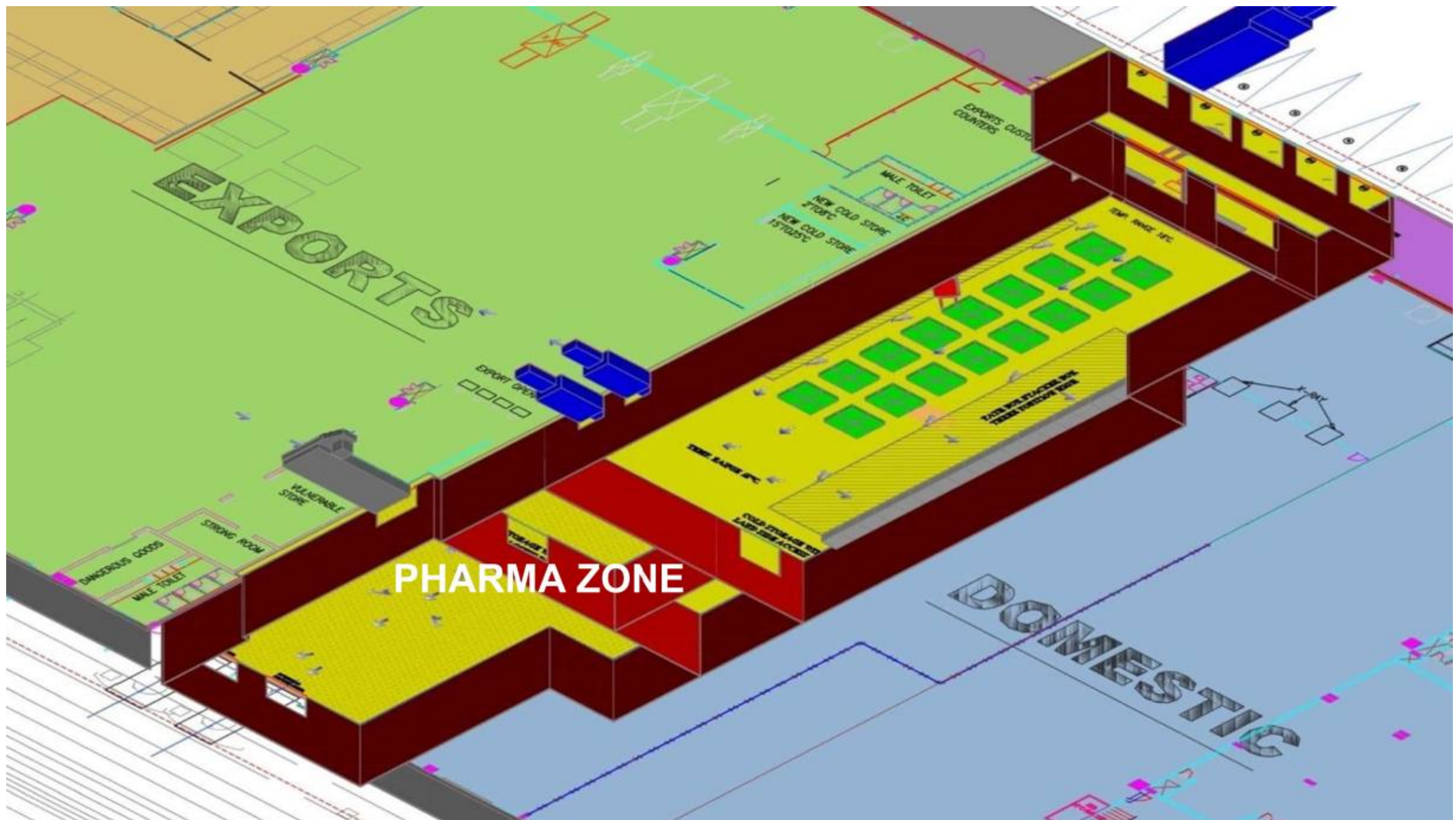
NEED FOR PHARMA ZONE AT HYDERABAD

- Export of temperature controlled pharmaceuticals continues to increase year on year
- Hyderabad Pharmaceutical Industry has tremendous growth potential.
- Majority of the Pharmaceutical products being exported are highly temperature sensitive and high value products
- Temperature controlled handling is must for the pharmaceuticals through out the supply chain
- Exposure to the extreme temperatures can render the drugs less effective, affect their potency thereby causing risk to the product during transportation
- Pharmaceutical products need dedicated handling with out contamination
- Pharmaceutical products should be dealt with dedicated equipment and trained personnel and need specific storage requirements

PHARMA ZONE at Hyderabad caters all the above handling requirements and reduces the exposure of the pharmaceuticals to the extreme temperatures

About GHACLPL Pharma Zone

- PHARMA ZONE was created by GHACLPL in 2010 to address the requirements of our customers dealing with Pharmaceutical Exports.
- GHACLPL has created the facility in consultation with the stake holders and invested over 05 crores for the project.
- Facility became fully operational effective 01st January 2011
- “Pharma zone” is designed to safely handle only pharmaceutical related time sensitive products such as bulk drugs, raw materials, formulations, medicines, vaccines etc
- Facility consists of +15 to +25 and +2 to +8 degree chambers in both the non-bonded and bonded areas
- Built over an area of 1400 sq. mts and designed to handle more than 30000 tons per annum
- Facility provides quality and dedicated temperature controlled handling for pharmaceutical products under effective hygienic conditions
- Acceptance, weighment, examination and screening is performed under temperature controlled conditions
- Facility also provides temperature controlled storage for unitized airline ULD’s (containers and pallets)
- Dedicated equipment facilitated for handling of Pharmaceutical Products in the Pharma Zone



GMR Hyderabad Air Cargo and Logistics Pvt. Ltd.

Flow chart - Pharma Zone Handling



Pharma Zone - Photographs

GMR Hyderabad Air Cargo and Logistics Pvt. Ltd.



Dedicated Truck Docks



Cargo Acceptance Area



Examination area (+15 to +25 deg)



Examination area
(+2 to +8 deg)



Airline Container/Pallet
storage area



ULD handling on Ball Matting system

GMR Hyderabad Air Cargo and Logistics Pvt. Ltd.

Key Features - Pharma Zone

Truck Dock Area

- 05 dedicated truck docks
- 02 truck dock levelers for multiple vehicle compatibility
- Temperature and humidity sensors
- CCTV surveillance

Non - Bonded Area

- 05 dedicated truck docks with automated doors and air curtains
- 02 dedicated truck dock levelers
- Customs inspection area spread over an area of 736 Sq Mts with a holding capacity of 180 skids at a time under temperature control +15 to 25 degrees
- Multi Level Racking system in the examination area with additional 126 slots for skids
- Exclusive cold storage with racking system for +2 to +8 degrees cargo
- Temperature recording with FDA approved data loggers

- Ambient temperature and Room temperature display with 12x12 inch display units
- SMS and Alarm alerts to track temperature excursions
- Risk Assessment
- Separate areas earmarked for storage of dangerous goods and small packages
- CCTV surveillance 24/7

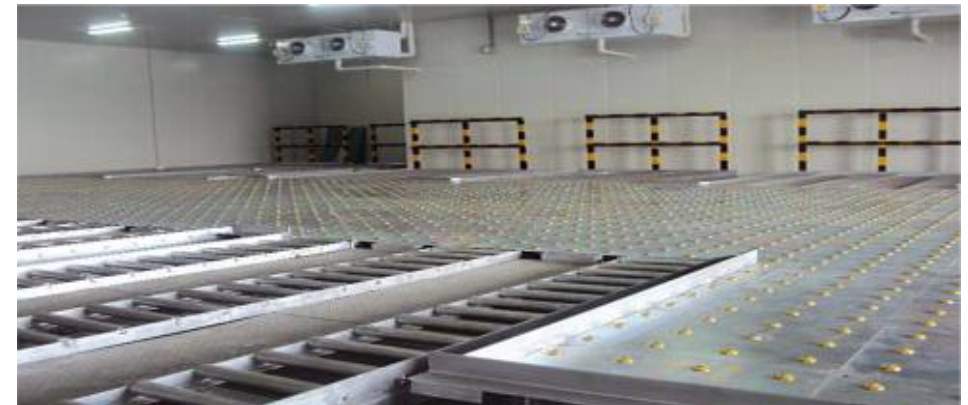
Bonded Area

- Separate +15 to +25 and +2 to +8 degree chambers in the bonded area for storage of Build up ULD's
- ULD weighing facility
- CCTV surveillance 24/7
- Data Loggers
- SMS and Alarm alerts
- Risk Assessment

GMR Hyderabad Air Cargo and Logistics Pvt. Ltd.

Material Handling Equipment - Pharma Zone

- 02 dedicated X-Ray machines (Capacity - 1200 Kgs, 200 Kgs)
- Electric Stacker - 01
- 03 ton capacity Forklift - 01
- Hand Pallet Trucks - 10
- Multi Level Racking System
- 02 Floor Level Weighing scales (capacity - 02 tons, 03 tons)
- Ball Matting system in bonded area which provides 18 Pallet positions in +15 to +25 degree chamber and 6 Pallet positions in +2 to +8 degree chamber



Ball Matting System



Electric Stacker



Racking System



Dedicated X - Ray Machines

GMR Hyderabad Air Cargo and Logistics Pvt. Ltd.

Area / Capacity Details - PHARMA ZONE

Category	Area (Sq Mts)	Capacity	Temperature range (Degrees Celsius)
Non - Bonded Area			
Truck Dock	120	-	+15 to +25
Customs Inspection Area	736	20 - 32 tons	+15 to +25
Racking System (in examination area)	50	38 - 60 tons	+15 to +25
Cold Storage (250 cu. mt)	50	24 - 34 tons	+2 to +8
Bonded Area			
Ambient storage - (for build up ULD's)	342	36 - 54 tons	+15 to +25
Cold Storage - (For build up ULD's)	102	12 - 20 tons	+2 to +8
Total	1400	130 - 200 tons	

OTHER COLD STORAGE FACILITIES

GMR Hyderabad Air Cargo and Logistics Pvt. Ltd.

Area/Capacity Statement - Exports temperature controlled facility for cargo other than Pharma products like Fruits and Vegetables/Meat/Sea Foods and other perishables

Category	Volume (Cu Mt)	Capacity (in tons)	Temperature range
Chamber 1	136	14	+2 to +25
Chamber 2	100	10	+2 to +25
Chamber 3	60	6	+2 to +25

Area/Capacity Statement - Import Cold Rooms

Category	Volume (Cu Mt)	Capacity (in tons)	Temperature range
Chamber 1	50	5	0 to -20
Chamber 2	120	13	+2 to +25
Chamber 3	79	7	+2 to +25

Thank You for your attention

Parul Kulshreshtha

Parul.Kulshreshtha@gmrgroup.in